

## MAXPRO® NVR XE (Xpress Edition)

### ENTRY LEVEL NETWORK VIDEO RECORDER (NVR)

Honeywell's MAXPRO® NVR XE is an ideal solution for entry into IP video surveillance systems. MAXPRO NVR XE utilises Honeywell's HD cameras to offer a powerful high definition IP recording and security monitoring system for small installations. MAXPRO NVR XE offers the advantage of HD quality IP video but is as easy as a DVR to setup and operate for a seamless transition from analogue to IP.

MAXPRO NVR XE comes pre-installed with all required software and is also pre-licensed for either 8 or 16 channels allowing up to 16 cameras to be added anytime later as your system grows. This, along with an easy three-step wizard to live video for auto configuration makes installing an IP system quick and efficient without requiring any IT expertise. Simple and logical configuration pages make setup easy even for the novice installer.

The MAXPRO NVR XE user interface is based on MAXPRO VMS, which offers a feature rich user experience. This familiar interface allows for the 'learn one, know them all' concept that allows for user comfort with a broad range of Honeywell products.

MAXPRO NVR XE supports simultaneous recording, live monitoring search and system management for up to 16 IP cameras including high definition formats.

MAXPRO NVR XE utilises powerful processor and memory technology supporting multiple simultaneous operations such as video recording and video viewing or alarm monitoring on the unit itself without the need for an additional workstation and also provides the option of remote monitoring. End users can view live video while simultaneously performing searches. Multiple units may be deployed for system expansion and multiple instances of client software can be run on the same workstation PC for simultaneous viewing of multiple units.

MAXPRO NVR XE also offers advanced features useful to entry level customers. Honeywell's patented Video Surround feature provides the ability to track subjects of interest as they move between areas covered by adjacent cameras by simply double-clicking on the panel where the subject is currently visible. Features such as the powerful preview search and film strip view allow for rapidly searching video for scenes of interest and then quick export method transfers video to an authenticated video clip playable through Windows Media player.

#### Market Opportunities

The continual growth of cost-effective IP networks and the demand for HD video offered by IP cameras have led to the need for entry level IP surveillance solutions. This has resulted in a strong demand for an all-IP end-to-end security system deployment. MAXPRO NVR XE provides an easy entry into IP-based systems and the operational power to address the needs of a wide variety of applications including healthcare clinics, small commercial and retail, property management and many other applications.

#### Key Benefits

- As easy to install and operate as a DVR – no IT expertise required
- Reduced security threats with HD quality video
- Quick to install - three steps to live video
- Local display – no PC needed
- Allows for system growth by supporting 16 cameras that can be added anytime
- Low cable cost – no homeruns of cable from camera to unit



HD



Three steps to live video

# MAXPRO® NVR XE (Xpress Edition)

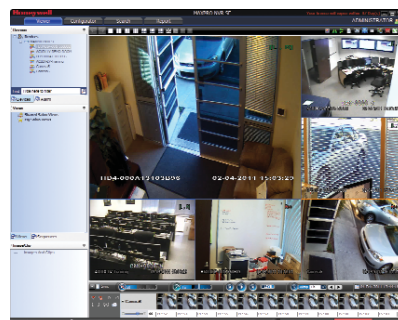
## FEATURES

### Software

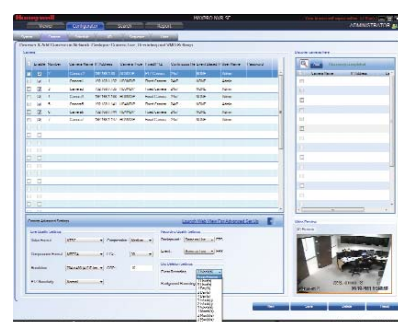
- MAXPRO NVR XE allows local or remote operations including live and recorded video monitoring, configuration and system management in a single interface
- Feature-rich, user-friendly Windows® 7 based interface to view HD video and configure system settings
- Easy three-step wizard to set up the system with auto-configuration and auto-discovery of IP cameras, recording and monitoring configuration - without any IT or IP expertise
- Multi-zoom views on HD video. Example: Zoom-in on cash till in one view of the HD camera while at the same time monitoring the cashier in the zoom-out view of the HD camera.
- Ability to investigate events and alarms by simultaneously viewing alarm videos at various stages. For every alarm, users can view the video captured during pre-alarm, on-alarm, and post-alarm, and also view live video from the camera which triggered the alarm.
- Honeywell's patented Video Surround feature simplifies the process of tracking subjects through a set of surrounding cameras
- Create, save and name salvos under My Salvos or Shared Salvos
- IP PTZ control and digital zoom on fixed cameras
- Fast search by date/time, time line, time jump, bookmarks, preview, film strip view and events
- Event history and operator log reporting with export in .pdf, Crystal Reports, Excel or Word
- Capture and export clips and still images in simple .wmv and .bmp formats. Clips signed with digital signature for authentication
- Supports multiple client connection to NVR unit
- Separate event video and general recorded video retention times
- E-mail notification on camera, system and operator events
- Role-based operator privileges supporting Windows and local users
- Utilises camera-based analytics and I/Os to reduce stress on the processor
- Keyboard control with UltraKey Plus and UltraKey Lite over Ethernet
- Local and multi-language support

### Hardware

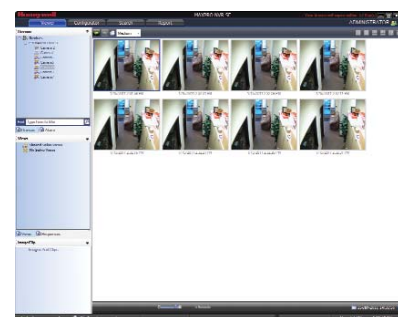
- Each unit records and monitors up to 16 cameras at high definition
- Includes a VGA output for local monitor providing access to monitoring and configuration interface
- Supports displaying 16 cameras at one time on the NVR local monitor
- Internal storage capacity of 1 TB – Video rated HDD
- DVD R/W drive for burning evidence clips
- Small desktop type footprint suitable for small spaces



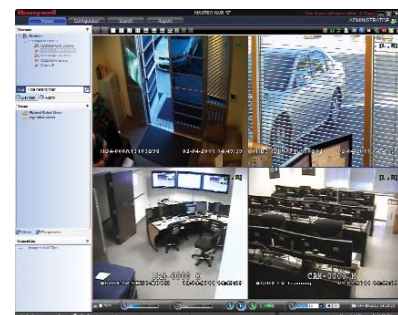
6 Split



Event Record



Preview



Quad

# MAXPRO® NVR XE (Xpress Edition)

## SPECIFICATIONS

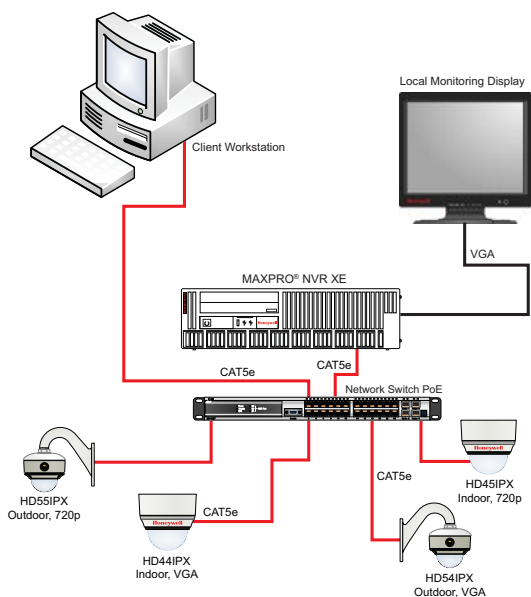
Operational	
MAXPRO NVR XE Software	
Database	Microsoft SQL Express
Operating system	Windows 7
Image compressions supported	MPEG-4, H.264
Supported Honeywell IP cameras	Supports Performance Series IP, EQUIP® Series cameras including high definition. Refer to <a href="http://www.honeywellsecurity.com/hota">www.honeywellsecurity.com/hota</a>
Supported third party IP cameras	Refer to the Honeywell Open Technology Alliance for a comprehensive list of compatible products to which this device is integrated. <a href="http://www.honeywellsecurity.com/hota">www.honeywellsecurity.com/hota</a>
Maximum number client connections	10 per unit
Salvo layouts	Full, 2x2, 1x5, 3x3, 2x8, 1x12, 4x4
Picture controls per camera	Sharpness, blur, brightness, contrast, hue, saturation, maintain aspect ratio, stretched, original size and picture mirror
OSD	Concealed text option
Playback controls per camera	FWD/REV Play x(1, 2, 4, 8, 16) Slow FWD/REV Play x (1/2, 1/4, 1/8)
Search types	Time/date timeline, time jump FWD/REV, bookmarks, preview, film strip and event search
Recording schedule	Constant and event based with H/M/D and holiday and exception days
Recording methods per camera	Constant, event-based and user activated
Live settings per camera	Compression format, resolution and frame rate
Recording settings per camera	Same as live or reduced frame rate
Clip format	WMV with digital certificate for authentication playable with Windows media player
Video clip authentication	Digital signature, verification tool provided
Motion detection location	Camera based
Event recording	Pre- and post-duration setting
Operator reporting	Per user, configurator, session and viewer
Event report	Per camera or recorder events
Operators	10

Operational	
MAXPRO NVR XE Hardware*	
Processor	Intel® Pentium™ Dual Core E5300
Memory	4 GB
Power supply	Single 300W 88% Efficient PSU; Energy Star 5.0 compliant, Active PFC
Storage capacities	1 TB
Optical	16X DVD-RW
Network	Single 1Gigabit Ethernet
Mouse and keyboard	USB
Rear Panel Connections	
USB	2 Front USB 2.0 ports 4 Rear USB 2.0 ports
Network	RJ45
Audio	1 Line-in/Microphone 1 Line-out
Monitor output	1 VGA
Electrical	
Input voltage	100-240 VAC, 60/50 Hz
Operating voltage	110/220 VAC, 60/50 Hz
Power consumption	300 W
Mechanical	
Construction finish	Chassis: Brushed steel Chassis: Black mat paint
Dimensions (w x h x d)	482.6 mm x 133.35mm x 565.15 mm
Weight	15 kg base, varies by model
Environmental	
Operating Temperature	10°C to 45°C
Storage Temperature	-40°C to 60°C
Relative Humidity	20% to 80% (non-condensing)
Regulatory	
Emissions	FCC: Part 15 Class B
Immunity	EN55024
Safety	UL/CSA 60950-1

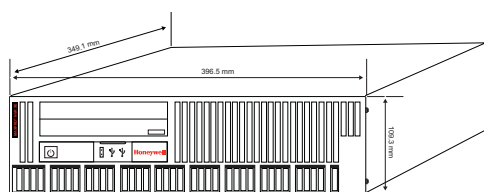
\*3-year hardware warranty and 3-year on-site support included.

# MAXPRO® NVR XE (Xpress Edition)

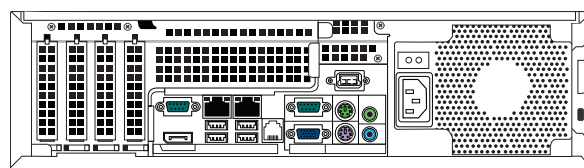
## SYSTEM DIAGRAM



## DIMENSIONS



Front View



Rear View

## ORDERING

Ordering MAXPRO NVR XE	
HNM8XE1T0X	MAXPRO NVR XE 8 Ch, NVR, Local Monitoring Display, 1 TB, DVD-RW, GIG Ethernet, PSIA Compliant
HNM16XE1T0X	MAXPRO NVR XE 16 Ch, NVR, Local Monitoring Display, 1 TB, DVD-RW, GIG Ethernet, PSIA Compliant
Recommended Entry Level Cameras: Performance Series IP Cameras	
HD44IPX	IP indoor dome camera, VGA, SDN
HD45IPX	IP indoor dome camera, 720p HD, SDN
HD54IPX	IP vandal dome camera, VGA, SDN
HD55IPX	IP vandal dome camera, 720p HD, SDN

**NOTE:** Honeywell reserves the right, without notification, to make changes in product design or specifications.

### For additional information,

please visit [www.honeywell.com/security/uk](http://www.honeywell.com/security/uk)

### Honeywell Security Group

Aston Fields Road  
 Whitehouse Industrial Estate  
 Runcorn  
 Cheshire  
 WA7 3DL  
 Tel: 08448 000 235  
[www.honeywell.com](http://www.honeywell.com)